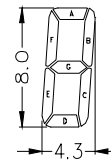
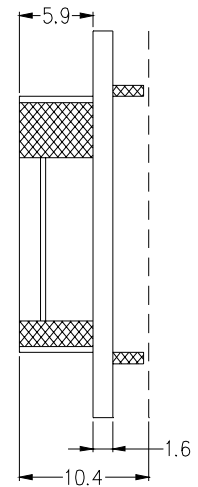
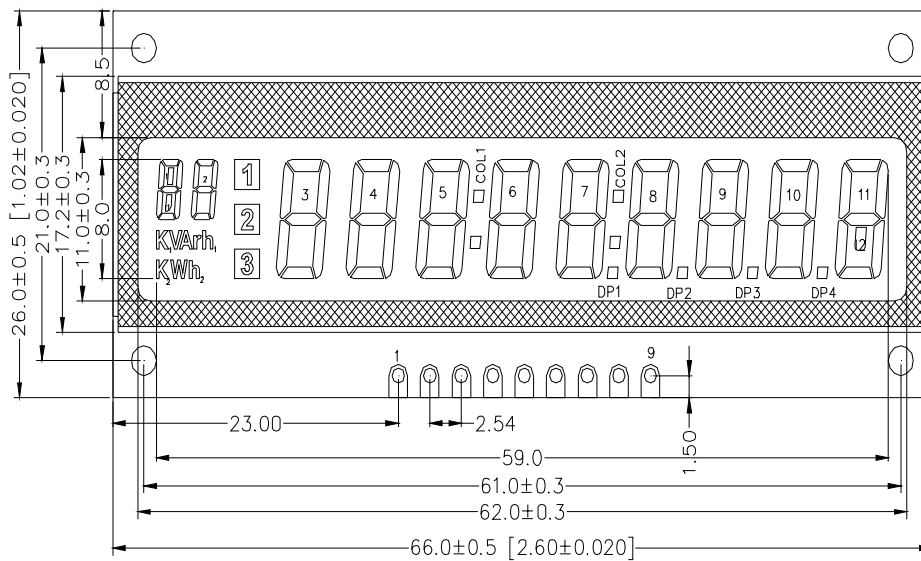


LCM0007

DIMENSION IN MM



PIN#	01	02	03	04	05	06	07	08	09	10	11	12	13	14	15	16	17	18	19	20	21	22	23	24	25	26	27	28
K1	V	1A	1B	2A	2B	3A	3B	4A	4B	5A	5B	6A	6B	7A	7B	8A	8B	9A	9B	10A	10B	11A	11B	C3				
h1	K2	1F	1G	2F	2G	3F	3G	4F	4G	5F	5G	6F	6G	7F	7G	8F	8G	9F	9G	10F	10G	11F	11G	C2				
A	r	1E	1C	2E	2C	3E	3C	4E	4C	5E	5C	6E	6C	7E	7C	8E	8C	9E	9C	10E	10C	11E	11C				C1	
W	h2	1D	1I	2D	1	3D	2	4D	3	5D	C1	6D	12	7D	C2	8D	9D	DP1	9D	DP2	10D	DP3	11D	DP4				C0

[*] DIMENSIONS FOR LED BACKLIGHT VERSION

TABULATED DATA

MODEL	DISPLAY FORMAT	DRIVING DUTY	LCD DRIVER	CHARACTER AREA W x H	VIEWING AREA W x H	PCB SIZE W x H
LCM 0007	7 Segment	1/4	HT 1621	59.0 x 8.0	62.0 x 11.0	66.0 x 26.0

ELECTRICAL DATA (Ta = 25°C, Vdd = +5V ± 0.25V)

ITEM	SYMBOL	TEST CONDITION	STANDARD VALUES			UNITS
			MIN.	TYP.	MAX.	
Input High Voltage	V _{IH}	-	4.0	-	5.0	V
Input Low Voltage	V _{IL}	-	0	-	1.0	V
System Clock	F _{SYSL}	-	-	256	-	KHz
Supply Current	I _{dd}	V _{dd} = 5.0V	-	300	-	uA
Stand By Current	I _{STB}	V _{dd} = 5.0V	-	0.3	-	uA
Operating Voltage for LCD	V _{dd-Vo}	T _a = 25°C	-	5.0	-	V
LED Backlight Current	I _{LED}	V _{dd} = 5.0V	20	50	70	mA

PIN DETAILS

PIN No.	DESCRIPTION	PIN No.	DESCRIPTION
1	\overline{CS}	5	GND
2	\overline{RD}	6	Vcc
3	\overline{WR}	7	\overline{IRQ}
4	\overline{DATA}	8 & 9	LED BL A & K

MAX. RATING

Item	MAX.
Top	-20 to +80°C
Tst	-25 to +85°C
Vdd	+5 Volts
RH%	90 %

OPTIONAL DETAILS

Wide configurations available. Kindly contact **LAMPEx** while ordering. Refer **LAMPEx LCM Catalog** for more Information.

LAMPEx reserves all rights. Specification might alter without prior notice.

CAUTION: STATIC SENSITIVE DEVICES