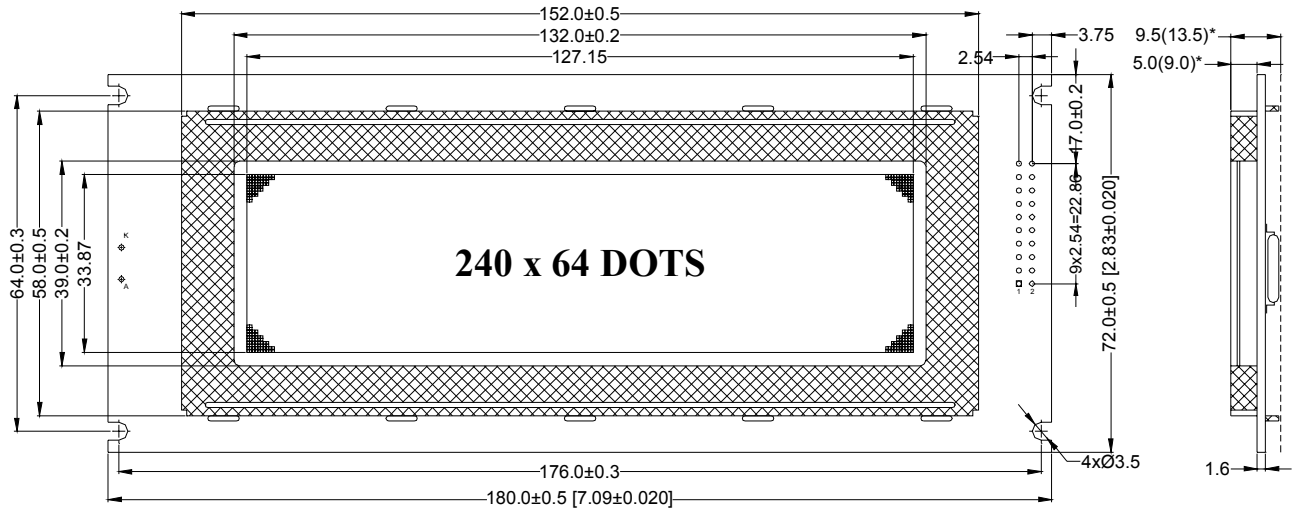
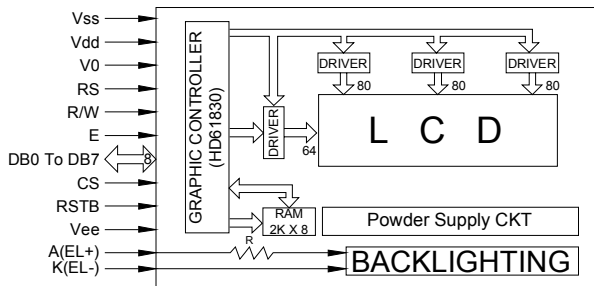


LG240642 [240 x 64, 1/64 MUX]

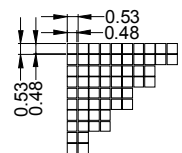
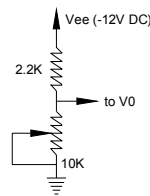
DIMENSION IN MM



BLOCK DIAGRAM



CKT FOR VLCD (VO)



[*] DIMENSIONS FOR LED BACKLIGHT VERSION

TABULATED DATA

MODEL	DISPLAY FORMAT DOT x DOT	DRIVING DUTY	DOT SIZE W x H	DOT PITCH W x H	VIEWING AREA W x H	PCB SIZE W x H
LG240642	240 x 64	1/64	0.48 x 0.48	0.53 x 0.53	132.0 x 39.0	180.0 x 72.0

ELECTRICAL DATA (Ta = 25°C, Vdd = +5V + 0.25V)

ITEM	SYMBOL	TEST CONDITION	STANDARD VALUES			UNITS
			MIN.	TYP.	MAX.	
Input High Voltage	V _{iH}	-	2.4	-	V _{dd}	V
Input Low Voltage	V _{iL}	-	V _{ss}	-	0.7	V
Output High Voltage	V _{oH}	I _{oH} = 0.6mA	V _{dd} -0.4	-	V _{dd}	V
Output Low Voltage	V _{oL}	I _{oL} = 1.6mA	-	-	0.4	V
Supply Current	I _{dd}	V _{dd} = 5.0V	-	14.0	20.0	mA
Operating Voltage for LCD	V _{dd} -V _{out}	Ta = 0°C	-5.2	-6.2	-12.0	V
		Ta = 25°C	-4.8	-5.8	-11.8	V
LED Backlight Current	I _{LED}	V _{dd} = 5.0V	120	140	180	mA

PIN DETAILS

PIN No.	DESCRIPTION	PIN No.	DESCRIPTION	PIN No.	DESCRIPTION
1	Gnd	5	R / \bar{W}	16	\bar{RSTB}
2	Vcc	6	E	17	Vee
3	Vo	7 to 14	DB0 to DB7	18	NC
4	RS	15	\bar{CS}	19 & 20	LED BL (A & K)

MAX. RATINGS

ITEM	MAX.
Top	-10 to +65°C
Tst	-20 to +70°C
V _{dd}	+5Volts
RH %	90%